

Date: February 24, 2014
To: Classroom Review Board
From: Rusty Scott
Re: Minutes of February 12, 2014

Members present: Jack Brouillette, Kristi Buffington, Pat Burns, Dave Carpenter, Stephanie Clemons, Debi Colbert, Lance Li Puma, C.W. Miller, Julia Murphy, Al Powell, Doug Satterfield, Rusty Scott

Members absent: Steve Hultin, Andrew Olson

1. Approval of Minutes
The minutes from December 12, 2013 were approved with two abstentions.
2. EMS Update – J. Murphy
EMS project remains on target to go live in April for fall 2014 scheduling as efforts continue related to integration of eID for logins. Environmental Health Services, Risk Management, Facilities and CSUPD have expressed interest in using EMS for event management. R. Scott will coordinate a meeting to better understand their scope, timing, and sense of urgency.
3. Herman Miller Research Project – S. Clemons
Stephanie will serve as the point of contact for the Herman Miller research project. The project focuses on collaboration among faculty members outside of the classroom and was presented to the Faculty Council Committee on Teaching and Learning. She has asked them to identify up to 7 Faculty in each Colleges to participate in the project.
4. Flipped Classroom Projects Update – R. Scott, K. Buffington, J. Murphy
 - a. Provost Initiative
Efforts are under way to identify suitable rooms for flipping, factoring room size and location, academic program and faculty. Engineering E204 and E205 have been identified with the help of Anton Betten (Math) to support math and physics courses with high DWF rates. Behavioral Sciences 105 was identified as having a variety of disciplines and faculty to be used as a sandbox. It is currently configured with tables and chairs and will not lose capacity if configured as flipped. Funding proposals will be presented to the UFFAB and UTFAB, and work continues with Herman Miller to determine furniture specifics and design of the room. TILT will be responsible for stewardship and training.
 - b. Eddy Remodel
The first phase of the Eddy project is scheduled for full use for the Fall semester of 2015. The capacity and configuration of the smaller rooms will not change. Room 100 will be configured with flexible furniture reducing seating capacity from 100 to 72 and is expected to have a dual projection system, a small lectern, movable units that include large displays with whiteboards, possibly additional whiteboards on the walls and small storage areas for teaching materials. A new (additional) classroom will be constructed immediately above room 100 and will be configured similarly.
 - c. Aggie Village (see below)

Scheduled for use in Fall of 2016, Aggie Village will house General Assignment classrooms;

- 2 with capacity of 75-88
- 3 with capacity 40-45
- 2 with capacity 25-30
- 2 seminar rooms with capacity of 10-15

All rooms will be configured with flexible furniture. Three of the classrooms have been proposed to have movable walls to allow for reconfiguring for large events. The CRB recommends fixed, permanent walls between the rooms, primarily for reasons of noise, complexity with regard to technology.

d. Laurel Village

Information coming.

e. Health and Exercise Sciences Building

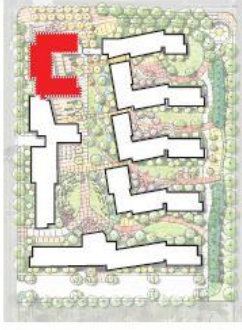
Scheduled for availability, Fall 2015 and is located directly north of Moby B-Wing. One general assignment classroom is proposed with flexible furniture and a capacity of approximately 100.

5. OnLinePlus Proposed Changes in Classrooms – A. Powell

To ensure that microphones are turned on for, in particular, distance courses, OnlinePlus proposes that either phones be configured to accept inbound calls from OnlinePlus support staff or have microphones installed that can be remotely activated. Further investigation of expense and complexity is needed.

6. Next meeting – **April 9, 2014, 3:00-4:00pm, 305 Computer Science Bldg (ISTeC Conference Room)**

Academic Concept



Group Study:	200-250 sq. ft.	10-12 Students
Seminar Spaces:	200-300 sq ft.	10-15 Students
Classroom Type A:	500-600 sq ft.	25-30 Students
Classroom Type B:	800-900 sq ft.	40-45 Students
Classroom Type C:	1500-1750 sq ft.	75-88 Students

Space Type	# of Classrooms	NSF Total
Study	3	660
Seminar	2	600
A	3	1,600
B	3	2,805
C	2	3,000
Total	13	8,665
Informal Learning	-	1,350
Student Support	-	1,000
Total (NSF):		11,015
30% Gross Up:		4,985
Total GSF:		16,000

